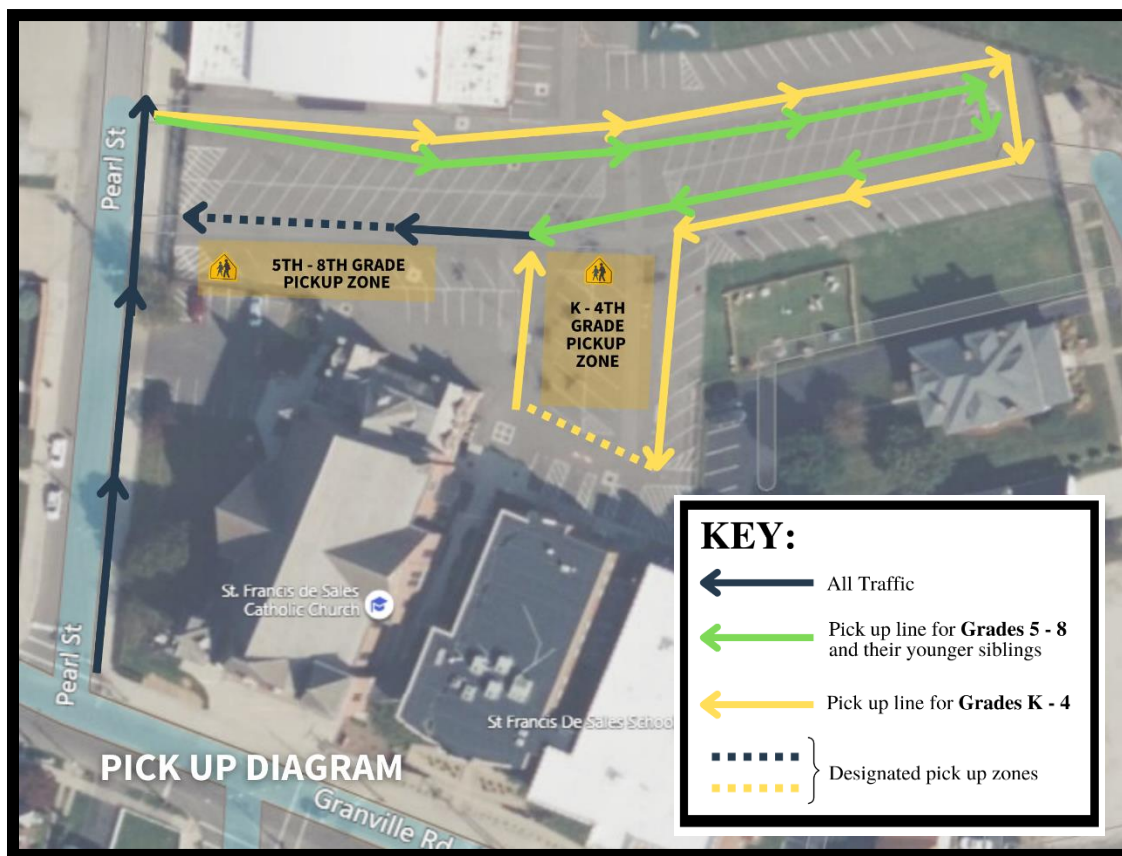


AFTERNOON PICK UP PROCEDURE



Due to roadwork in our neighborhood, we have modified the pick up procedure for Fall 2022. Please expect that there will be changes as the construction continues to move down Granville Street.

- All vehicles are to proceed down Pearl Street and enter the rear parking lot through the gate nearest to our gym building (Slattery Hall) then proceed to the appropriate line:
 - RIGHT LANE:** Pick up line for students in **grades 5 – 8** and their younger siblings. Their pick up area is noted by the dotted blue line nearest to the Pearl Street exit.
 - LEFT LANE:** Pick up line for students in **grades K-4**. Their designated pick up zone as noted by the yellow line nearest to the Lamy Center.

A NOTE ABOUT PICK UP ZONES

Please pull forward as far as possible within the pick up zones. Once all within the zone are fully stopped, children will be allowed to enter vehicles. Then, once all children are safely in their vehicles, the entire group will be released to exit.

- Due to traffic and space constraints, please **DO NOT LINE UP PRIOR TO 2:20PM**. In addition, please **DO NOT BLOCK** the exit gate while in line waiting to enter the parking lot.
- PRESCHOOL:** Preschool pick up will begin at 3:00. Please do not get in line until 3 pm. The pick up procedure will be the same pattern as morning preschool drop off.

Please be kind, courteous and patient. Call the school office with any questions. 740.345.4049